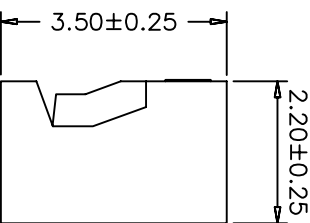
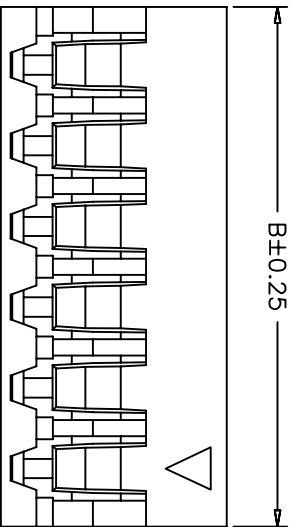
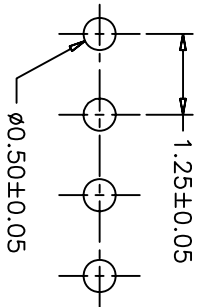
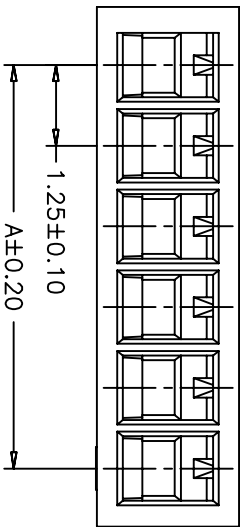


SPECIFICATIONS

Voltage rating: 125V AC, DC
 Current rating: 1A, AC, DC (AWG#28)
 Withstanding voltage: 500V AC/minute
 Insulation resistance: 100M
 Temperature range: -25°C - +85°C
 Contact resistance: 20mΩ max

HOUSING

Part No.: SCT1252H-2xXXP
 Poles: 2-15
 Material: Nylon 66 UL94V-0
 Q'TY: 1,000 pcs/bag



PART NO.	Dimensions	
	A	B
SCT1259HV-2P	1.25	3.05
SCT1259HV-3P	2.50	4.30
SCT1259HV-4P	3.75	5.55
SCT1259HV-5P	5.00	6.80
SCT1259HV-6P	6.25	8.05
SCT1259HV-7P	7.50	9.30
SCT1259HV-8P	8.75	10.55
SCT1259HV-9P	10.00	11.80
SCT1259HV-10P	11.25	13.05
SCT1259HV-11P	12.50	14.30
SCT1259HV-12P	13.75	15.55
SCT1259HV-13P	15.00	16.80
SCT1259HV-14P	16.25	18.05
SCT1259HV-15P	17.50	19.30

OPERATION	~ 10	± 0.15	DRAW	Judy.Huang	2006/05/02	SCALE	
	20 ~ 30	± 0.30	DESIGN			UNIT	mm
	30 ~	± 0.50	CHECK	Micky.Liu	2006/05/02	SIZE	A4
ANGLE	± 2'		APPROVE	Hellen.Li	2006/05/02	SHEET	1/1
DIM	TOL					PROJ.	



PART NO. SCT1259HV-XXP
 TITLE: Molex51022 1.25 Housing
 DRAWING NO. SCT1259

REV	DATE	MODIFICATION DESCRIPTION	CHANGE	APPROVE
0	05/12/27	NEW		