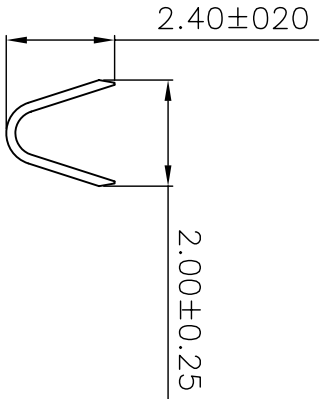
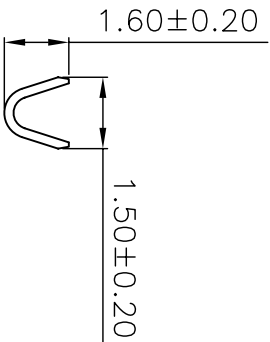
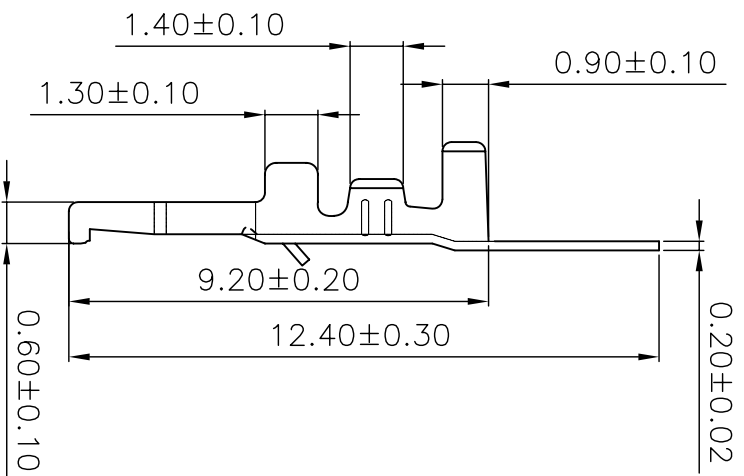


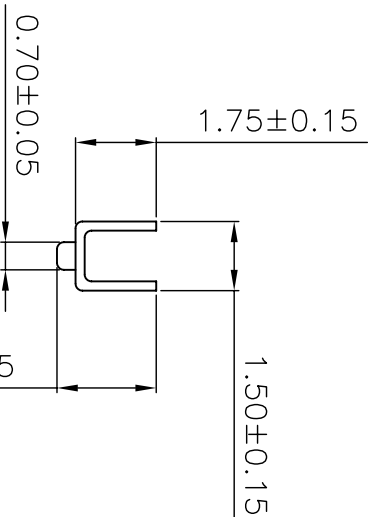
1.00±0.05



A-A



B-B



C-C

TERMINAL

- . Part NO: SCT2003TPV
- . Thickness: 0.20mm
- . Wire Range: AWG#24-#30
- . Material: Brass
- . Finish: Tin Plated
- . Hardness: H/EH
- . Reel Q'ty: 10000pcs

REV	0	05/12/27	NEW	CHANGE	APPROVE	OPERATION	~ 10 ±0.15	DRAW	Micky.Liu	2008/09/04	SCALE		
DATE						ANGLE	20 ~ 30 ±0.30	DESIGN			UNIT	mm	
MODIFICATION DESCRIPTION						DIM	30 ~ ±0.50	CHECK	Judy.Huang	2008/09/04	SHEET	A4	
						TOL	± 2'	APPROVE	Hellen.Li	2008/09/04	PROJ.	1/1	
												PART NO.	SCT2003TPV
												TITLE:	SAN2.0 180C TERMINAL
												DRAWING NO.	SCT2003

**SCONDAR** 森康达电子有限公司  
SCONDAR ELECTRONIC LIMITED