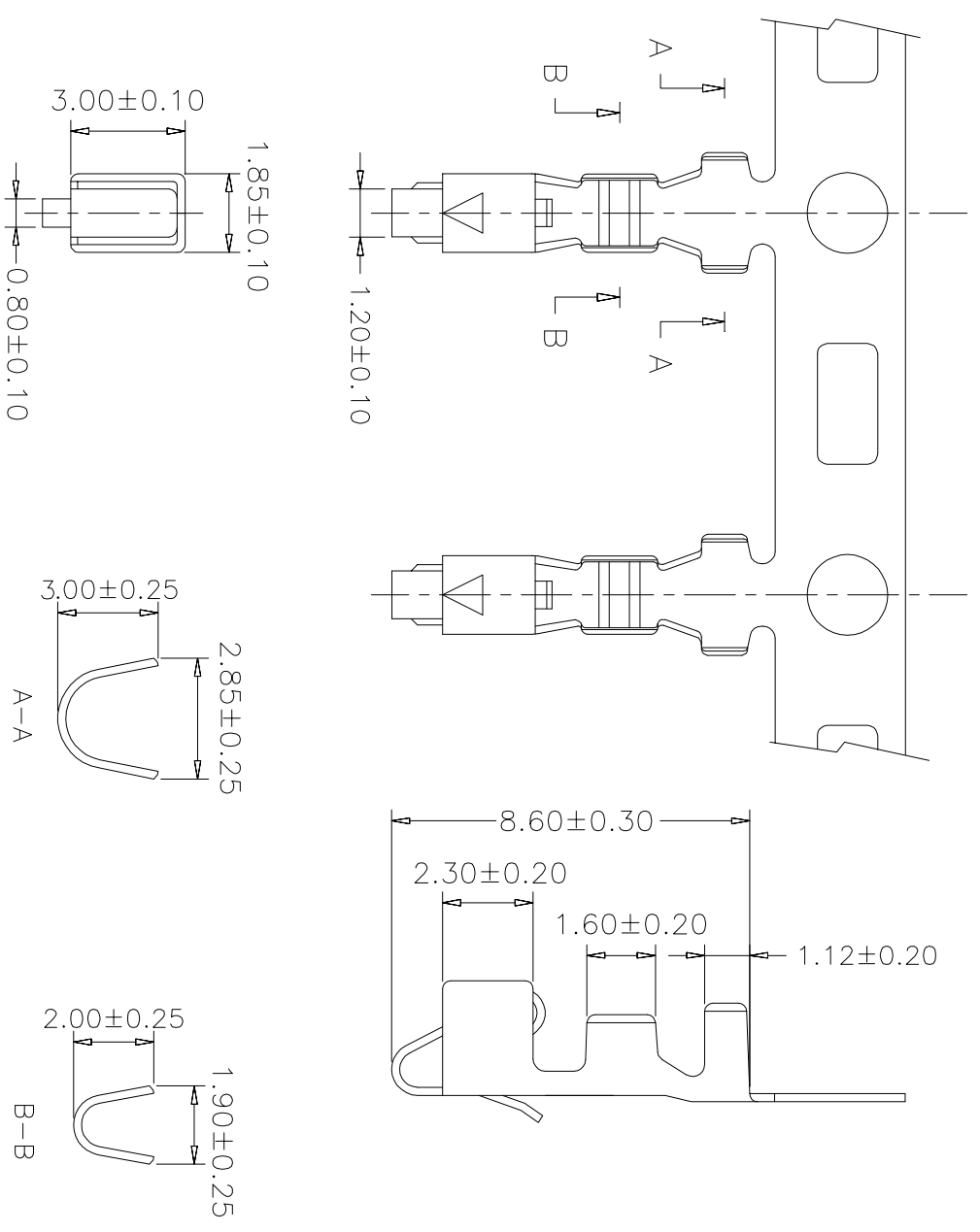


1 2 3 4 5 6 7 8 9 10



SPECIFICATIONS

Voltage Rating: 250V AC/DC
 Current Rating: 3A AC/DC
 Withstanding Voltage: 1500V AC/minute
 Insulation Resistance: 500M Ω min.
 Temperature Range: -25°C - +85°C
 Contact Resistance: 20m Ω max

TERMINAL

Part No: SCT2505FT
 Wire Range: AWG#22 - #28(OD1.8mm)
 Material: Brass
 Finish: Tin Plated
 Thickness: 0.2mm
 Q'TY: 5,000PCS/Reel

G F E D C B A

| | | | | | | | | | | | | | |
|-----|------|--------------------------|---|---------|--------------|----------------------------|---------|--------|------------|-------|---|-------------|-----------------------|
| REV | 2 | 2019.09.11 | 模具损耗, 图纸尺寸修改: 1. 总长由8.90mm修改 8.60mm 2. 1.70mm修改1.60mm 3. 2.00mm修改1.85mm 4. 包线宽3.00mm修改2.85mm 5. 包铜宽2.20mm修改 1.90mm | Troye | Allen | OPERATION | DRAW | CHENA | 2019.09.11 | SCALE | SCONDAR 森康达电子有限公司 SCONDAR ELECTRONIC LIMITED | | |
| | 1 | 2004.09.11 | 建立图档 | CHENA | HELLEN | ~ 10 20 ~ 30 30 ~ | DESIGN | | | UNIT | | | |
| | DATE | MODIFICATION DESCRIPTION | CHANGE | APPROVE | Angle DIM | ± 2' | CHECK | MICKY | 2019.09.14 | SIZE | | A4 | |
| 1 | | | | | | ± 0.15 ± 0.30 ± 0.50 | APPROVE | HELLEN | 2019.09.18 | SHEET | 1/1 | PART NO. | SCT2505FT |
| | | | | | | | | | | PROJ. | | TITLE: | SM2.5 FEMALE TERMINAL |
| | | | | | | | | | | | | DRAWING NO. | SCT2505 |

1 2 3 4 5 6 7 8 9 10

H G F E D C B A